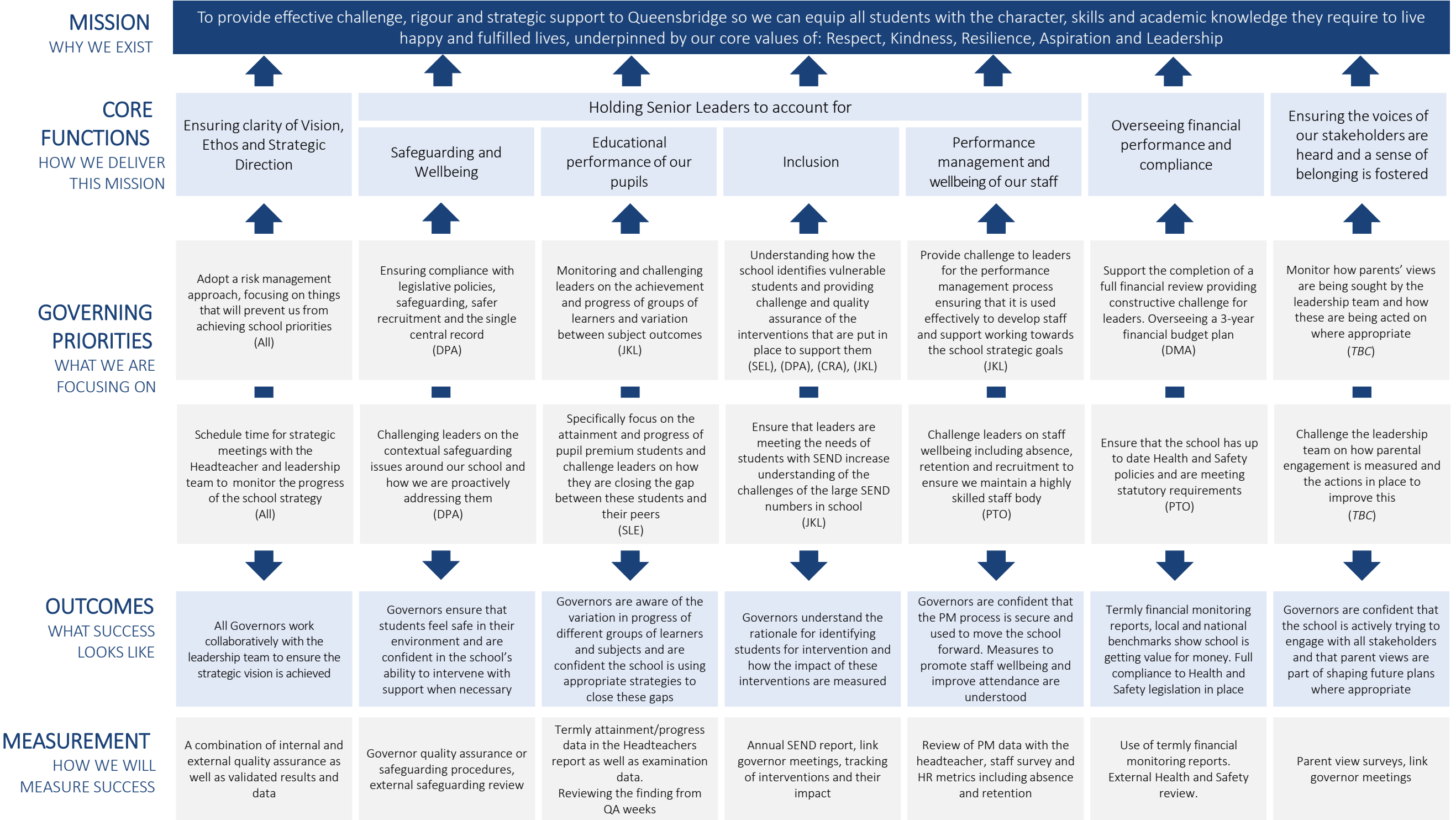


Governing Board Strategy 2025-26



LINK GOVERNORS

Quality of Education - JKL	Safeguarding - DPA	SEND provision - JKL	Finance - DMA	Pupil Premium - SLE
Health and Safety - PTH	Inclusion - CRA	Behaviour – DPA	Attendance – SEL	PSHE/RSE - SEL
Governor Training and Development – JKL	Equality and Diversity – SEL	Staff Wellbeing - PTO	Careers - TBC	Arts - CRA
Eco/sustainability strategy – paused for 1 year	School Food – BKE	Parents in Partnership - TBC		